



OPERATION INSTRUCTIONS

Model: LT200TLPN

Working Load Limit: 2000kg



CONFORMS TO AUSTRALIAN STANDARDS NO. AS2615:2016



Karmot Pty Ltd

**Unit D, 26 Penny Place,
Arndell Park, NSW 2148**

Phone:
1300 KARMOT
1300 527 668
(Australian Wide)

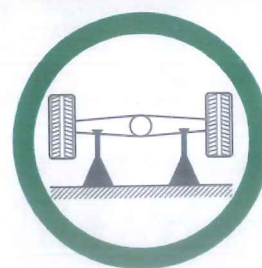
Web:
sales@karmot.com
www.karmot.com



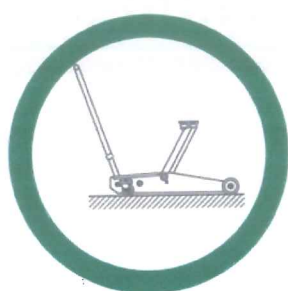
SAFETY WARNINGS



**DEATH OR INJURY FROM
INCORRECT USE**



**USE TWO SUPPORT
STANDS**



FLAT HARD LEVEL GROUND



**FREE TO ROLL DURING
LIFTING AND LOWERING**

**REFER TO VEHICLE MANUFACTURER'S MANUAL FOR
INSTRUCTIONS**

SAFE USAGE INSTRUCTIONS

- i) Consult the vehicle manufacturer's manual prior to lifting of the vehicle.
- ii) Conduct a pre-operational check of equipment
- iii) Use the hydraulic trolley jack for lifting and lowering only; the raised vehicle should be supported on suitably rated vehicle support stands
- iv) Use the hydraulic trolley jack on hard level surface and ensure it is free to roll during lifting and lowering
- v) No person should remain in the vehicle that is being lifted
- vi) Chock the unlifted wheels of the vehicle
- vii) Centrally locate the load on the head cap
- viii) Support the vehicle on suitably rated vehicle support stands and remove the hydraulic trolley jack prior to commencement of work on the vehicle.
- ix) No person should get bodily under a vehicle that is supported only by a hydraulic trolley jack

MAINTENANCE INSTRUCTIONS

If the jack is in constant use, drain and refill with Ritch hydraulic oil or equivalent once a year.

The level of oil should be maintained approximately 6.3mm (1/4" below filler cap).

Top up with Ritch hydraulic oil. Lubricate the wheel axles and all pivot points with engine oil every month.

Use grease around arm pins and lubricate grease nipple every 3 months.

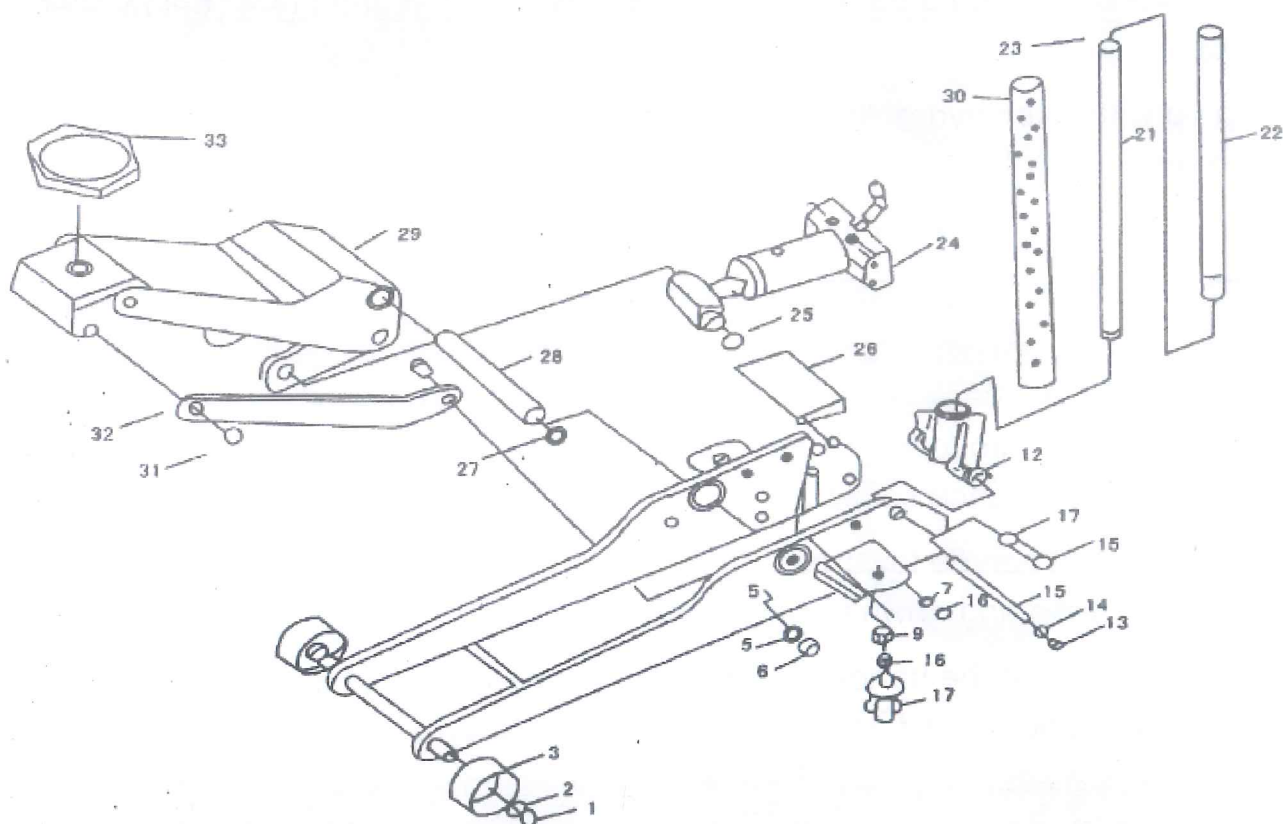
ASSEMBLY INSTRUCTIONS

1. Assembly - Unpack jack - Assemble jack handle using nut and bolt supplied. Insert handle into fork and tighten bolt. Check oil levels and apply oil or grease as per maintenance schedule.
2. To lift - Twist handle towards the right (clockwise) as far as it will turn. Pump the handle up and down to raise the jack.
3. To lower - Twist the handle slowly towards the left (anticlockwise). This will lower the jack.

MODIFICATIONS

Modifications must not be carried out or accessories added

SPARE PARTS LIST



Part No.	Description	Qty	Part No.	Description	Qty	Part No.	Description	Qty
1	Retaining ring	2	12	Screws	2	21	Handle lower	1
2	Washer 20	2	13	Hex nut M12	2	22	Handle upper	2
3	Wheel	2	14	Washer 12	4	23	Hex bolt M6X20	1
4	Side plate assem-	1	15	Pull rod	2	26	Inspection plate	2
5	Washer 16	2	16	Bolt	1	27	Retaining ring 30	2
6	Hex nut M16	2	17	Spring washer	1	28	Shaft arm	2
7	Spring washer 12	2	18	Handle socket	1	29	Lift arm assembly	1
8	Hex bolt M12 X20	20	24	Power unit Ass'y	1	30	Bolt	1
9	Nut M18	2	25	Retaining rig 30	1	31	Retaining ring 18	1
10	Spring washer 18	2	19	Bolt	1	32	Long linkage	1
11	Caster assembly	2	20	Handle bumper	1	33	Saddle	1