



INSTRUCTION MANUAL & PARTS BREAKDOWN



Model 14350 4 Ton Forklift Jack

2347 Circuit Way, Brooksville, Florida, USA 34604
Phone: (+1) 352-799-1111 Toll Phone: (+1) 877-775-4AME (4263)
Fax: (+1) 352-799-1112 E-mail: sales@ameintl.net www.ameintl.net



INSTRUCTION MANUAL

! WARNING !

To avoid serious personal injury, always wear proper protective gear, such as hard hats, safety glasses, gloves, and steel toe shoes when using hydraulic equipment. Failure to chock the wheels and crib the vehicle can result in Serious injury or death. Always deflate tires before removing a wheel, a rim, or part of a rim clamp or nut. If you do not deflate the tire, the tire could explode, causing serious injury or death. Always stand to one side of the rim when using the bead breaker. Standing to one side of the bead breaker allows you to maintain control of the bead breaker. If it is not seated properly and flies off the rim, the bead breaker could cause serious injury or death.



SAVE THESE INSTRUCTIONS.

For your safety and the safety of others around you, read carefully before attempting to install, assemble, service or use this forklift & tractor jack. Observe all safety and warning information. Failure to comply with the information contained within could result in severe, even fatal injury and/or property damage.

GENERAL DESCRIPTION

INTENDED USE-- A versatile jack having a low enough profile to raise forklifts and a high enough profile to raise farm equipment, tractors and some earth moving equipment.

Technical Features

1. Two lift points for numerous lifting applications
2. 2-9/16" low profile height at the scissors end for lifting forklift.
3. Short pump arc provides faster rising and eliminates the need to bend down to get the full pump stroke.
4. Front and rear wheels ensure jack centered under the load.
5. Safety overload valve prevents jack from being beyond its rated capacity.

Important Notice

It is the responsibility of the owner and / or operator to read this instruction manual carefully before using this jack. Proper use and care of the jack will help assure you of continuous, safe, trouble free performance. Failure to follow any of these instructions may result in property damage or personal injury.

WARNING!

The forklift & tractor jack is designed for raising forklift or other farm equipment only. Use only on hard level surface. Follow safety instructions included with product for safe use.

Safety Warnings

1. This is a lifting device only. Do not use as a dolly while vehicle is on the jack.
2. Do not overload which may cause damage to or failure of the jack.
3. Lifting only on the points suggested or specified by the vehicle manufacturer.
4. Be sure to use jack on hard, level surface ground.



INSTRUCTION MANUAL

! WARNING !

To avoid serious personal injury, always wear proper protective gear, such as hard hats, safety glasses, gloves, and steel toe shoes when using hydraulic equipment. Failure to chock the wheels and crib the vehicle can result in Serious injury or death. Always deflate tires before removing a wheel, a rim, or part of a rim clamp or nut. If you do not deflate the tire, the tire could explode, causing serious injury or death. Always stand to one side of the rim when using the bead breaker. Standing to one side of the bead breaker allows you to maintain control of the bead breaker. If it is not seated properly and flies off the rim, the bead breaker could cause serious injury or death.



Safety Warnings (Cont.)

5. Do not work under vehicle while jack is the only support device.
6. Any parts missing or damaged or found to be badly worn, it should be removed from service.
7. Failure to comply with these warning may result in loss of load, damage to jack, and/or failure resulting in personal injury or property damage.

Specifications:

| | |
|-----------------|---------------------|
| Lifting Weight: | 8800 lb (4000 kg) |
| Lifting Range: | 13-3/4" (350 mm) |
| Min Height: | 2-9/16" (65 mm) |
| Max Height: | 16-3/8" (415 mm) |

Assembly :

1. Remove unit from package. It is recommended to have two people lift the jack.
2. Lift up on the top cylinder until at a 90 degree vertical position. Slowly lower the cylinder while guiding the u-shaped piston rod pad at the bottom of the cylinder onto the frame.
3. Lay the jack on its side. Using a hammer and punch, tap the dow pin into the u-shaped piston rod until flush. This will secure the cylinder onto the frame.

Operation:

Raising the Jack

1. Turn handle knob clockwise, until resistance is felt. Do not over tighten.
2. Place jack directly under vehicles to be lifted. Check the position under slight load to confirm jack or load will not slip, and is properly centered under load.
3. Raise jack by pumping handle until desired height is reached. After lifting, secure load by jack stand or other appropriate means. Do not use jack as the only means of support.

Lowering the Jack

1. Slowly turn handle knob counter-clockwise. Speed of descent is controlled by how much the release valve is opened. Always lower slowly and with caution
2. Always store jack in the fully lowered position.



INSTRUCTION MANUAL

! WARNING !

To avoid serious personal injury, always wear proper protective gear, such as hard hats, safety glasses, gloves, and steel toe shoes when using hydraulic equipment. Failure to chock the wheels and crib the vehicle can result in Serious injury or death. Always deflate tires before removing a wheel, a rim, or part of a rim clamp or nut. If you do not deflate the tire, the tire could explode, causing serious injury or death. Always stand to one side of the rim when using the bead breaker. Standing to one side of the bead breaker allows you to maintain control of the bead breaker. If it is not seated properly and flies off the rim, the bead breaker could cause serious injury or death.



Troubleshooting

1. If jack fails to rise to its limit, or performs poorly, remove oil fill plug (42), and inspect hydraulic oil level.
2. Fill with high quality hydraulic jack oil to the level. Replace oil fill plug and test jack under no load for proper function and operation several times.
3. Sometimes during shipment and handling, air may be flowed into the hydraulic system, causing poor lifting performance. Before initial operation, purge any air from the system by fully opening pump release valve (turn handle knob counter-clockwise). Pump handle rapidly several times and close pump release valve. If jack does not lift properly, please repeat air purging process.

Maintenance

1. All the linkage and moving joints require frequent lubrication. Any chassis grease and motor oil can be used.
2. The jack should be stored in a place being well ventilated and moist-proof.

- READ INSTRUCTIONS CAREFULLY BEFORE USE. INSPECT JACK BEFORE EACH USE. CHECK FOR DAMAGED WELDS.
- ALWAYS WORK ON A SOLID LEVEL SURFACE, NEVER ROLL ACROSS A SURFACE WITH CRACKS, HOLES OR OTHER OBSTACLES WHICH MIGHT IMPEDE MOVEMENT.
- NEVER EXCEED THE RATED CAPACITY
- FAILURE TO COMPLY WITH ANY OF THESE CAUTIONS MAY CAUSE SERIOUS INJURY.

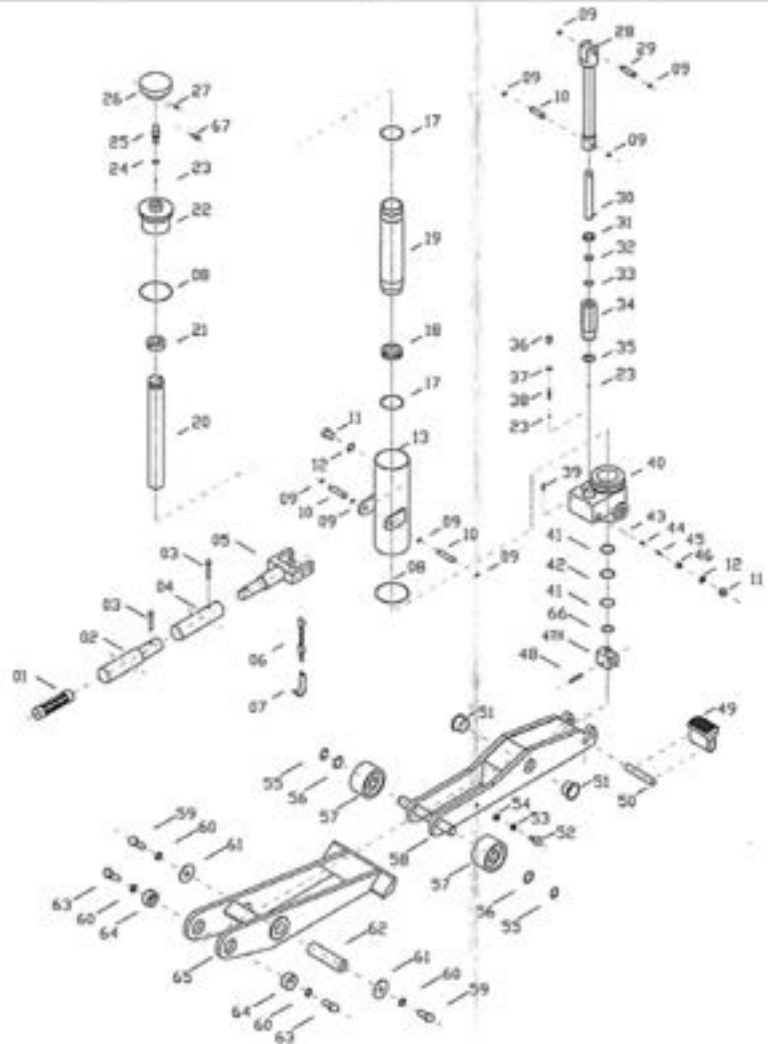


SPECIFICATIONS BREAKDOWN

! WARN

To avoid serious injury, always wear protective gear, such as hard hats, safety glasses, and steel toe shoes when using hydraulic equipment. Failure to chock and crib the vehicle can result in Serious Injury or death. Always depress the handle before removing the tire rim, or part of a rim nut. If you do not depress the handle, the tire could fly off the rim, causing serious injury or death. Always stand on the opposite side of the rim when the bead breaker is in use. The bead breaker allows you to maintain control of the bead breaker. If the bead breaker is not seated properly, it could fly off the rim, the tire breaker could cause injury or death.

| | |
|------------------------------------|----------------------------|
| Rated Capacity | 8,800 lbs./4000 kgs |
| Starting Pad Height (Notch) | 2 1/2" / 65mm |
| Max. Raised Height | 7 4/5" / 200mm |
| Width | 9 7/8" / 250 mm |
| Weight | 100 lbs / 47 kg |





INSTRUCTION MANUAL

! WARNING !

To avoid serious personal injury, always wear proper protective gear, such as hard hats, safety glasses, gloves, and steel toe shoes when using hydraulic equipment. Failure to chock the wheels and crib the vehicle can result in Serious injury or death. Always deflate tires before removing a wheel, a rim, or part of a rim clamp or nut. If you do not deflate the tire, the tire could explode, causing serious injury or death. Always stand to one side of the rim when using the bead breaker. Standing to one side of the bead breaker allows you to maintain control of the bead breaker. If it is not seated properly and flies off the rim, the bead breaker could cause serious injury or death.



Parts List For 4 Ton Forklift Jack Model 14350

| Item # | Description | Qty |
|---------------|--------------------|------------|
| 14350-001 | Handle Grip | 1 |
| 14350-002 | Handle | 1 |
| 14350-003 | Pin 6x40 | 2 |
| 14350-004 | Handle Base | 1 |
| 14350-005 | Gasket | 1 |
| 14350-006 | Pump Housing | 1 |
| 14350-007 | O Ring 15.54x2.63 | 1 |
| 14350-008 | Back up Ring | 1 |
| 14350-009 | Wiper | 1 |
| 14350-010 | Plunger | 1 |
| 14350-011 | Retainer Ring 10 | 6 |
| 14350-012 | Link | 2 |
| 14350-013 | O Ring 21.5x2.65 | 1 |
| 14350-014 | Retainer Nut | 1 |
| 14350-015 | Release Knob | 1 |
| 14350-016 | Shaft | 2 |
| 14350-017 | Pin 3x20 | 1 |
| 14350-018 | Release Valve Stem | 1 |
| 14350-019 | O Ring 8X18 | 1 |
| 14350-020 | Washer | 4 |
| 14350-021 | Retaining Ring | 1 |
| 14350-022 | Cylinder Cap | 1 |
| 14350-023 | O Ring 47.5x2.65 | 2 |
| 14350-024 | Piston Segment | 3 |
| 14350-025 | Piston Rod | 1 |
| 14350-026 | O Ring 37.5x3.55 | 1 |
| 14350-027 | Back Up Ring | 1 |
| 14350-028 | Cylinder | 1 |
| 14350-029 | Port Ring | 1 |
| 14350-030 | Pump Pin | 1 |
| 14350-031 | Hex Bolt M12x20 | 1 |



INSTRUCTION MANUAL

! WARNING !

To avoid serious personal injury, always wear proper protective gear, such as hard hats, safety glasses, gloves, and steel toe shoes when using hydraulic equipment. Failure to chock the wheels and crib the vehicle can result in Serious injury or death. Always deflate tires before removing a wheel, a rim, or part of a rim clamp or nut. If you do not deflate the tire, the tire could explode, causing serious injury or death. Always stand to one side of the rim when using the bead breaker. Standing to one side of the bead breaker allows you to maintain control of the bead breaker. If it is not seated properly and flies off the rim, the bead breaker could cause serious injury or death.



Parts List For

4 Ton Forklift Jack

Model 14350

| Item# | Description | Qty |
|-----------|-----------------------|-----|
| 14350-032 | Saddle | 1 |
| 14350-033 | Piston Rod Pad | 1 |
| 14350-034 | Bearing | 2 |
| 14350-035 | Saddle Pin | 1 |
| 14350-036 | Retaining Ring 20 | 2 |
| 14350-037 | Washer | 2 |
| 14350-038 | Wheel | 2 |
| 14350-039 | Frame 1 | 1 |
| 14350-040 | Retaining Ring 30 | 2 |
| 14350-041 | Frame Pin | 1 |
| 14350-042 | Screw M12x1.5x35 | 2 |
| 14350-043 | Trunnion | 2 |
| 14350-044 | Frame 2 | 1 |
| 14350-045 | Bolt | 1 |
| 14350-046 | Bolt M8x8 | 1 |
| 14350-047 | Washer | 3 |
| 14350-048 | Steel Ball 6 | 2 |
| 14350-049 | Screw | 2 |
| 14350-050 | Screw | 1 |
| 14350-051 | Spring | 1 |
| 14350-052 | Valve Rod | 1 |
| 14350-053 | Spring | 1 |
| 14350-054 | Washer | 1 |
| 14350-055 | Screw | 1 |
| 14350-056 | Oil Tank | 1 |
| 14350-057 | O Ring 70.5x2.65 | 1 |
| 14350-058 | Plug | 1 |
| 14350-059 | Handle Lock and Chain | 1 |
| 14350-060 | Steel Ball 8 | 1 |
| 14350-061 | Axle | 1 |

2347 Circuit Way, Brooksville, Florida, USA 34604

Phone: (+1) 352-799-1111 Toll Phone: (+1) 877-775-4AME (4263)

Fax: (+1) 352-799-1112 E-mail: sales@ameintl.net www.ameintl.net